

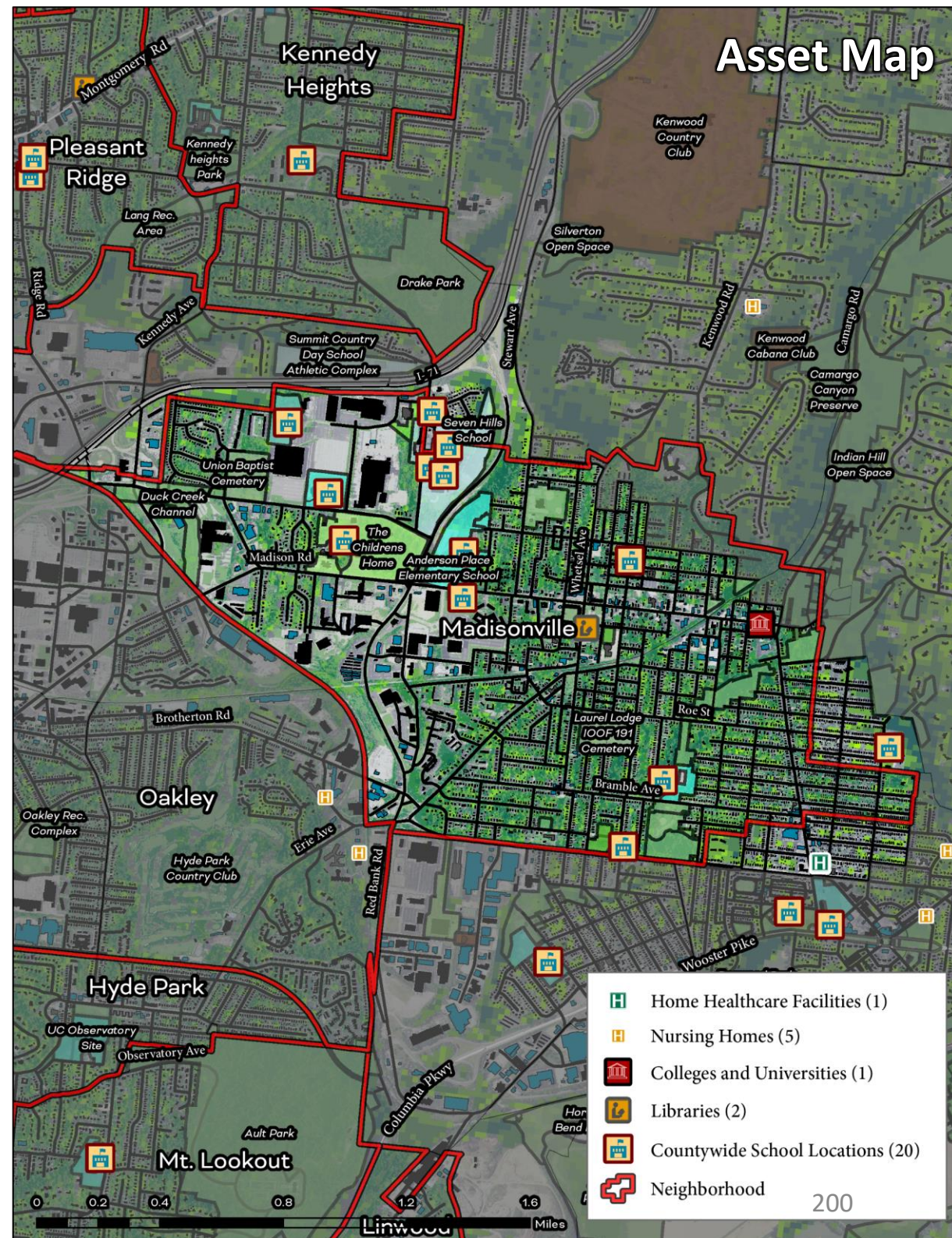
Madisonville

Cincinnati Neighborhood Profile

Madisonville is a mixed-race neighborhood (white - 54.6%, Black - 39.1%) of about 10,000 people with a larger portion of the residents (more than 1/3) either more than 65 years old or under 17 years old. 29.5% of the residents have received at least a bachelor's degree.

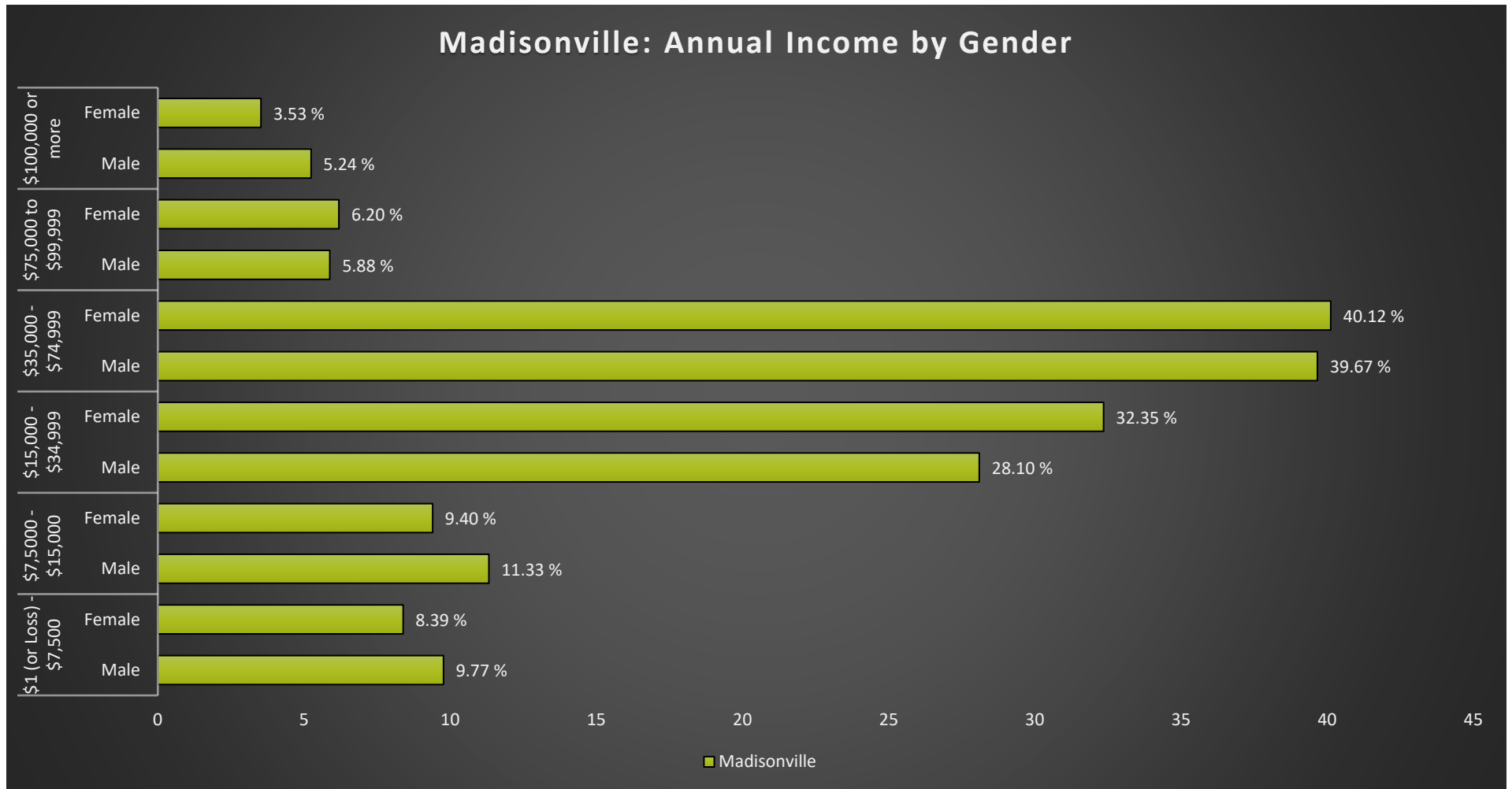
The neighborhood had "average" prevalence of health indicators. Average life expectancy for the neighborhood is 72.4 years old and more than 35% of the population has high blood pressure (36.1%) and is dealing with obesity (36.9%). Most ecosystem and infrastructure indicators are also in the upper half of the neighborhoods assessed with 17% tree cover and 12% of the land area set aside as parks.

17.7% of the population is living in poverty with 58.8% of the residents renting their accommodations and 22.9% spending more than 30% of their income on rent and utilities.



Madisonville

Cincinnati Neighborhood Profile



Madisonville Notable Indicators		
<i>Renters Spending 50% of Income or More on Rent + Utilities</i>	<i>Cancer Risk from Air Pollution</i>	<i>Children Living w/ Grandparents</i>
11th	Extreme	4% (one of the highest of all neighborhoods assessed)

Madisonville

Cincinnati Neighborhood Profile

People			
Indicator	Rank	%	# of Persons
Population	-	-	10,330
Persons over 65	35	15.5%	1,596
Persons 17 and Under	17	19.4%	2,003
Children Living w/ Grandparents	46	4.0%	415
Race/Ethnicity:			
Black	-	39.1%	4,043
white	-	54.6%	5,645
Asian	-	2.2%	224
Other	-	4.0%	418
Latinx	-	3.5%	364
Persons 5 and Older in Households w/ Limited English Ability	14	0.1%	8

Health			
Indicator	Rank	Value	
Life Expectancy	30	72.4 years	-
Disease Prevalence Estimates:			
	Rank of % w/Condition	% with Condition	Persons with Condition
Asthma	18	10.6%	1,097
Cancer	28	5.7%	592
Diabetes	22	13.7%	1,417
High Blood Pressure	24	36.1%	3,729
Heart Disease	20	6.6%	679
Kidney Disease	20	3.1%	321
Obesity	20	36.9%	3,816
Lack of Health Insurance	13	9.7%	1,004
Persons w/ Independent Living Difficulty	19	2.4%	246
Persons Living w/ Disability	21	13.2%	1,364

Ecosystems and Infrastructure		
Indicator	Rank	Value
Tree Canopy Coverage	28	17.6%
Greenness of Land Surface	29	51.8%
Percent Land in Parks and Greenspaces	29	12.2%
Impervious Surface	31	40%
Heat Island Exposure	30	0.68
Walkability	-	Least Walkable to Most Walkable
Persons w/ Low-Income and Low Food Access	19	18.6%
Transit Accessibility	-	Poor to Excellent
Daytime Population vs. Resident Population	36	139.9%
Commuters Leaving Each Day	-	5,580
Commuters Using Public Transit	14	3.5%

Madisonville

Cincinnati Neighborhood Profile

Socio-Economic Indicators			
Indicator	Rank	%	#
Persons Living in Poverty	14	17.7%	1,825
SNAP Recipient Households	14	12.7%	659
Educational Attainment:			
Less than High School	-	5.0%	-
HS or Equivalent	-	17.9%	-
Some College	-	14.1%	-
Associate's Degree	-	9.1%	-
Bachelor's Degree or Higher	-	29.5%	-
Educational Attainment Index	13	0.53	-
Extreme Housing Burdens:			
Renter-Occupied Housing (as % of All Housing Units)	20	58.8%	3,042
Renters Spending 30% of Income or More on Rent + Utilities	17	22.9%	1,187
Renters Spending 50% of Income or More on Rent + Utilities	11	8.5%	439
Homeowners Spending 30% of Income or More on Mortgage + Utilities	31	21.0%	447
Average Energy Costs (as % of Income)	16	3.5%	-
Persons without Vehicle Access	14	5.9%	606

Built Environmental Hazards		
Indicator	Relative Exposure Level	Value
Traffic Exposure	Very High	-
Potential Lead Paint Exposure (Houses Built pre-1960)	High	72.20%
Cancer Risk from Air Pollution	Extreme	-
Respiratory Disease Risk from Air Pollution	Very High	-
Proximity to Water Pollution Sources	Moderate	-
PM2.5 Levels in Air, µg/m3	Very High	9.78
Ozone Concentration, ppb	Very High	46.80
Diesel Particulate in Air, µg/m3	Very High	1.12
Proximity to Superfund Sites	Very High	-
Proximity to Potentially Toxic Industrial Activity	Very High	-
Proximity to Hazardous Waste Treatment and Disposal Facilities	Extreme	-

Neighborhood Planning	
Indicator	Description
Community Councils	Madisonville Community Council
Community Development Corporations	Madisonville Community Urban Redevelopment Corporation
Community Plans	Madisonville Neighborhood Business District Urban Renewal Plan (2002)